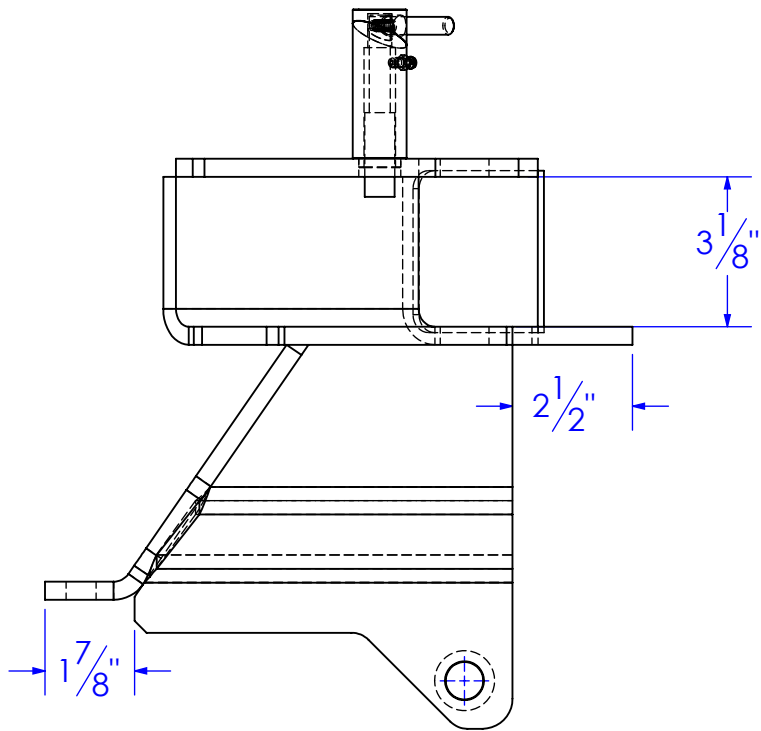
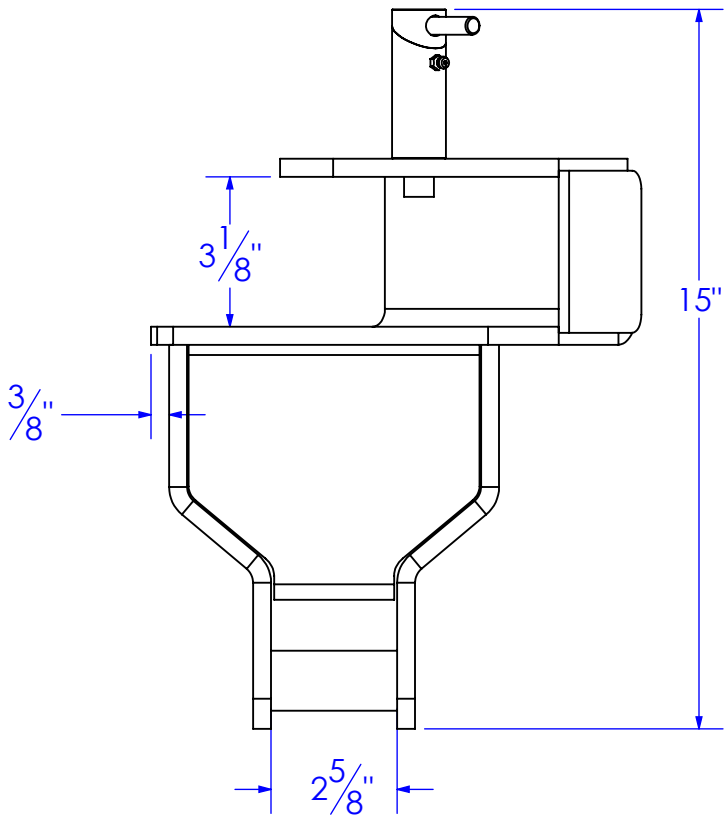
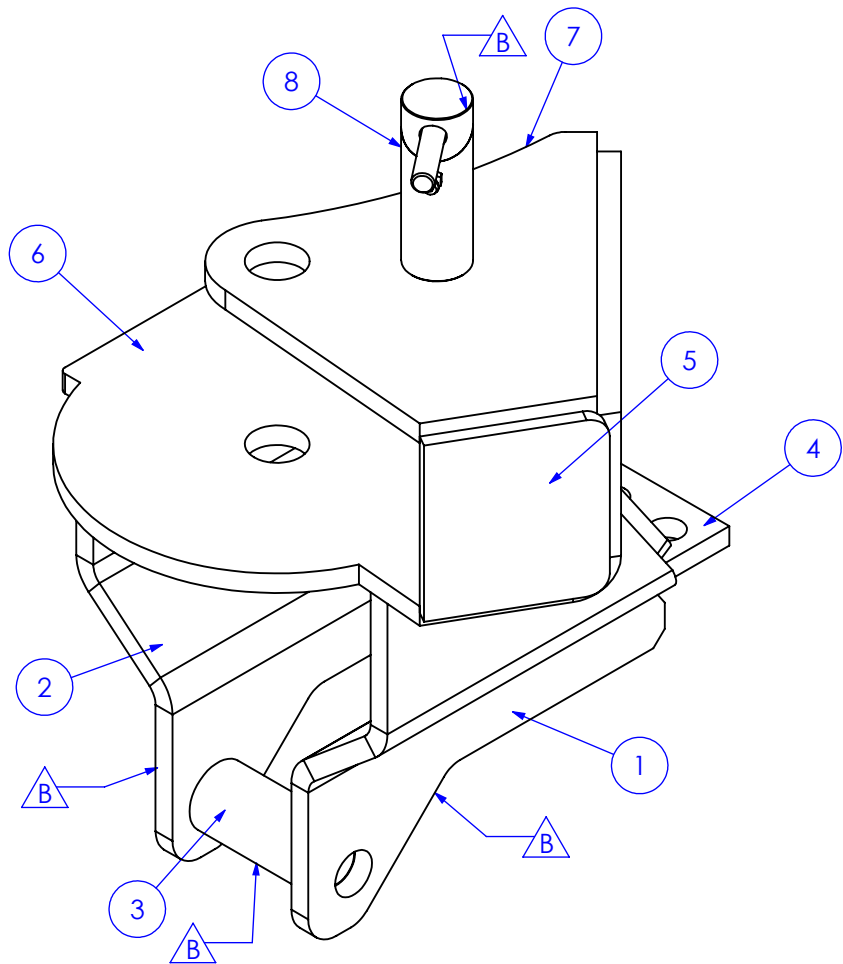
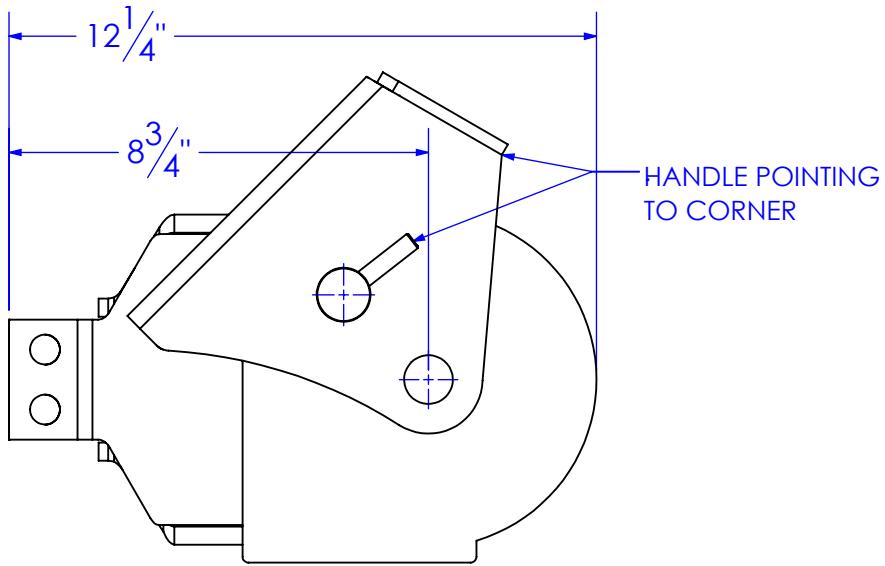


ITEM NO.	PART NUMBER	DESCRIPTION	MATERIAL	DRAWING #	QTY.
1	FP-HF8-BSPI	SIDE PLATE BASE, INNER, FIGURE 8	3/8" HRS	12-2481-2	1
2	FP-HF8-BSPO	SIDE PLATE, BASE, OUTER, FIGURE 8	3/8" HRS	12-2481-1	1
3	FP-HF8-BU 95-2236	BUSHING 25/32" ID x 1-1/4" OD x L 2-5/8" FIGURE 8	ST-MT 3/4x1-1/4	95-2236	1
4	FP-HF8-FRNT PLATE	PLATE, SUPPORT, FRONT, FIGURE 8	3/8"HRS	12-2481-3	1
5	FP-HF8-PBEC	END CAP, PIVOT BASE, FIGURE 8	1/4" HRS	12-2481-6	1
6	FP-HF8-PIVOT BASE-1	PLATE, PIVOT BASE-1, HYDRAFIGURE 8	3/8" HRS	12-2481-4	1
7	FP-HF8-PIVOT BASE-2	PLATE, BASE, PIVOT, HYDRA FIGURE 8	3/8" HRS	12-2481-5	1
8	FP-HF8-TLP625	PLUNGER, CAM LOCK, REEL LIFT		12-1423	1

REVISIONS			
REV.	DESCRIPTION	DATE	APPROVED
A	INITIAL RELEASE	6/27/2019	
B	UPATED PARTS NUMBERS TO MATCH PEACHTREE	11/5/2022	HP (JD)




DRAWING LOCATION:  
M:\Drawings\Ethan\Solidworks drawings\12 REEL LIFT\1X00 FABRICATION DWG\1400 Rear Assembly  
ASM. LOCATION:  
M:\Drawings\Ethan\Solidworks drawings\SOLIDWORKS MODELS\SUB\SUB-HF8

**PROPRIETARY AND CONFIDENTIAL**  
THE INFORMATION CONTAINED IN THIS  
DRAWING IS THE SOLE PROPERTY OF TRIPLE  
C INC. ANY REPRODUCTION IN PART OR  
AS A WHOLE WITHOUT THE WRITTEN  
PERMISSION OF TRIPLE C, INC IS PROHIBITED.

UNLESS OTHERWISE SPECIFIED:  
DIMENSIONS ARE IN INCHES  
TOLERANCES:  
FRACTIONAL ± 1/16  
ANGULAR: MACH ± 1 BEND ± 1  
TWO PLACE DECIMAL ± 010  
THREE PLACE DECIMAL ± 005  
MATERIAL  
DO NOT SCALE DRAWING

	NAME	DATE
DRAWN	ETHAN	11/19/2022
PART #	Part #	
ASM #	SUB-HF8-BASE	
COMMENTS:		
WELDMENT, BASE, HYDRA FIGURE 8		

P.O. BOX 248, SABETHA, KS 66534 (785) 284-3674 FAX (785) 284-3931			
			
SIZE	DWG. NO.	REV	
B	12-1413	B	
SCALE: 1:4	WEIGHT: 27.65	SHEET 1 OF 1	